



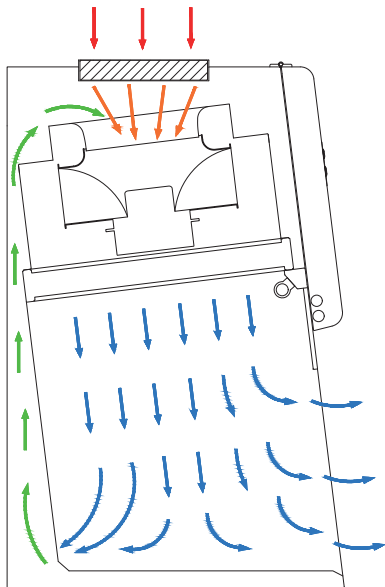
VERTICAL TYPE LAMINAR AIRFLOW CABINET C Series



- Ergonomic Design
- Spacious and Comfort Work Area
- Reliable Product/Material Protection
- Class 100 / ISO 5 Cleanliness Class

“Laminar Airflow (LAF) cabinet ensures particle-free environment for product & material/sample protection against airborne dust or microorganisms”

AIRFLOW DIAGRAM



- HEPA Filtered Air (Fresh Air)
- Air Passing through the Prefilter
- Ambient Air
- HEPA Filtered Recirculated Air

Metisafe Vertical LAF cabinets work under air filtration, recirculation and indoor exhausting principle. Room air passes through pre-filters that block coarse particles at the device top and reaches the work cabinet area with an air velocity of 0.40 m/s ($\pm 5\%$) by passing through a HEPA filter. Built-in laminator in fan filter module supplies the airflow in a homogeneous and laminated way. Design of working cabinet and air diffusion assures trimmed airflow and sweeping dead zones. Air moves in two ways in the working cabinet: one part is exhausted to the room at the front by reversing room air movement into the working zone. The rest of the internal air is recirculated from the back holes of the cabinet by increasing HEPA filter life.



Main Body and Design Features

- Main body from antibacterial electrostatic paint coated on steel
- $<7^\circ$ angle back sloped front panel for work comfort and increased working chamber vision
- Easy reachable electronic control & electrical part protection inside at front panel isolated from working chamber
- UV resistant glass front window and side windows

With the increasing needs of cleanroom workstations almost all laboratories have an application field for LAF cabinets, such as electronic, optic, pharma and food industries

- Homogeneous and cruise control airflow
- Advanced filter compensation system keeping steady air velocity under increased filter resistance
- Negative plenum Fan/Filter Unit suitable for non-stop operation
- Homogeneous illumination
- Timer controlled effective disinfection by UV Lamp
- D.O.P. test ports

ELECTRONIC CONTROL UNIT

- Power, Fan, UV and FL lamp On/Off buttons
- Digital screen with real-time air velocity data
- Standby and Normal work modes
- Advanced filter compensation system keeping fixed airflow rate under increased filter resistance
- Audial alarm activation with unproper air velocity rates



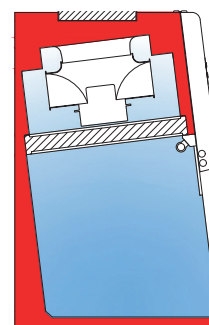
Laf cabinet control panel



Easy access, isolated control unit from the contaminated area



Monoblock stainless steel work plate Spacious working cabinet



Plenum cast design creates negative pressure around contaminated work area and ensures zero leakage



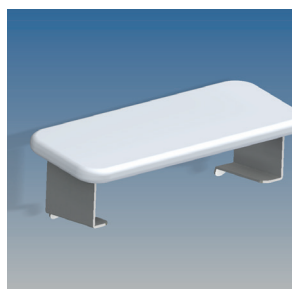
CAT #	OPTIONALS
MOP.HTS	Humidity/Temperature Sensor
MOP.CFL.EU4	Active Carbon Impregnated Pre-filter
MOP.PMS	Particle Measure System
MOP.BWT	Precision Balance with Vibration Damping Weighing Table
MOP.MDS	Manual Decontamination System



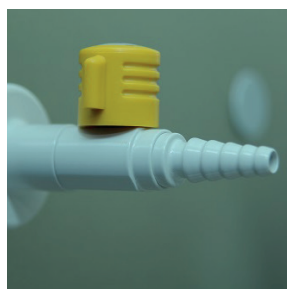
CAT #	ACCESSORIES
MAC.HAS	Height Adjustable Support Stand
MAC.WSS	Wheeled Support Stand
MAC.UVC	Portable Germicidal UV Lamp
MAC.MIS	Microbiological Air Sampling Apparatus
MAC.ASA	Arm Support Apparatus
MAC.UPS	Uninterruptible Power Supply (UPS)
MAC.ADH	Acrobat Document Holder
MAC.AMH	Acrobat Monitor Holder
MAC.INC	Incinerator
MAC.DID	Disinfection Dispenser
MAC.ECM	Document/Equipment Cleaning Module
MAC.VLF	Service Valves
MAC.FOS	Foot Stand



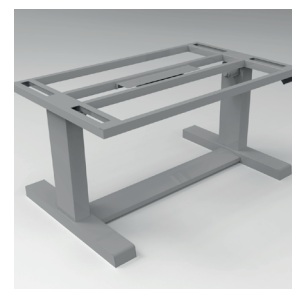
Incinerator



Arm Support Apparatus

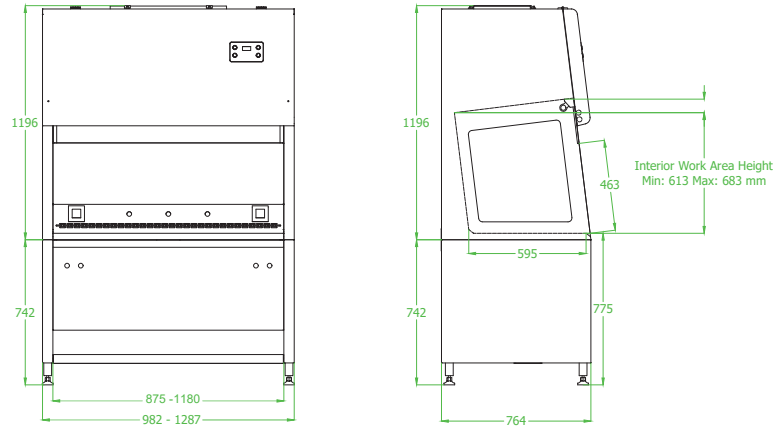


Service Valves



Height Adjustable Support Stand

METISAFE C SERIES VERTICAL TYPE LAF CABINET TECHNICAL DRAWING



METISAFE C SERIES VERTICAL TYPE LAF CABINET TECHNICAL SPECIFICATIONS

Model	LFV-C90	LFV-C120
DIMENSIONS and WEIGHT		
Internal Dimensions (WxLxH) mm	875 x 595 x 613	1180 x 595 x 613
External Dimensions (WxLxH) mm	982 x 764 x 1196	1287 x 764 x 1196
Support Stand (WxLxH) mm	982 x 764 x 742	1287 x 764 x 742
Working Table Height (mm)	775 mm	
Cabinet Weight (Kg)	150	190
Support Stand Weight (Kg)	30	34
Packaged Total Weight (With Support Stand) (Kg)	210	255
Pack/Palette Dimensions (With Support Stand) (WxLxH) mm	1050 x 1150 x 1600	1410 x 1450 x 1600
HEPA FILTER and AIRFLOW DYNAMICS		
Airflow Velocity	Down Flow	0.45 m/s \pm %20
Filters (EN 1822)	Pre-Filter	EU4
	Main Filter	H14 HEPA, 0,3 μ m particle %99.995 < filtration efficiency
Airflow Rate m ³ /h	615	770
ENERGY		
Energy Consumption 230 VAC- 50Hz	Fan Filter Unit	227 W
	Illumination	18 W
	UV Lamp	18 W
	Electrical Socket Power/Current	2x1150 W / 2x5 A
Total Power / Current		2563 W / 11,1 A
Power Consumption Under Normal Operating Conditions (Illumination and Fan Motor)		245 W / 1 A
ERGONOMICS and COMFORT		
Front Window Aperture (Fixed)		463 mm
Noise Level		\leq 60 dB
Illumination		\geq 750 Lux
WORKING AREA		
Working Table	Standard	304 Stainless Steel
	Optional	316 Stainless Steel
Front Window Thickness		\geq 6 mm
QUALITY and CERTIFICATIONS		
CE, ISO9001-2015 Quality Management Certificate, ISO14644 Cleanroom Class Compatibility, EN61010 Electric and Electronic Safety Compatibility, Accredited Testing Institution Validation Guarantee in case the installation is operated by Metisafe® Certified Technical Personnel		

