

# METISAFE STERILITY TEST ISOLATOR C Series



- Reliable Sterility Test Cabinet
- Positive or Negative Pressured
- Integrated Full Automatic Decontamination
- Low Energy Consumption
- GMP Complied

“Metisafe® Sterility Test Isolators are workstations that prevent airborne contamination and provide a particle-free and dust-free environment in performing aseptic processes such as sterile works and sterility tests in the pharmaceutical industry and pharmacology.”

Depending on the hazard level and maintenance of sterility of the material being worked or tested, isolators are classified as a positive or negative pressure cabinets.

## Main Body and Design Features

- Sealed main body covered with antibacterial electrostatic paint on stainless steel
- <math>7^\circ</math> tilted front panel for increased operation chamber visibility and ergonomics work comfort
- Protection of the electronic control panel by isolating it from the work chamber
- UV-resistant safe front glass
- Air-tight glove gaskets and glove ports
- Homogenous and cruise control airflow
- Advanced filter compensation system keeping steady air velocity under increased filter resistance
- Continuous work suitable negative plenum fan filter unit
- Timer controlled effective disinfection by UV beams
- D.O.P test port

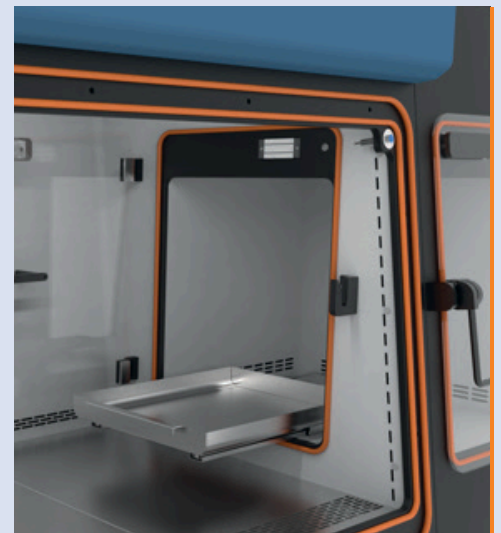
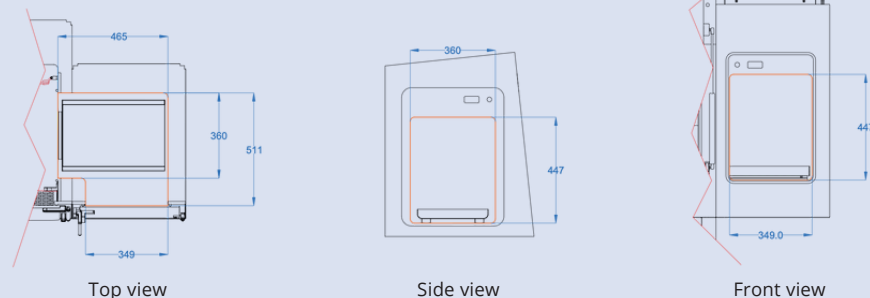


## Active Pass-Box

Material transfers into the work chamber are accomplished by leakproof gloves assembled at front panel ports through an interlocked mechanism dynamic pass-box. In this way, air exchanges and physical contact between the material inside the cabin and the external environment are prevented, and a controlled environment is provided.

- Stainless steel interior with wide-angle rounded corners
- Material transfer with sliding tray mechanism
- Safety-enhanced tempered glass covers
- Electromagnetic door lock system

### Pass-Box Internal Dimensions



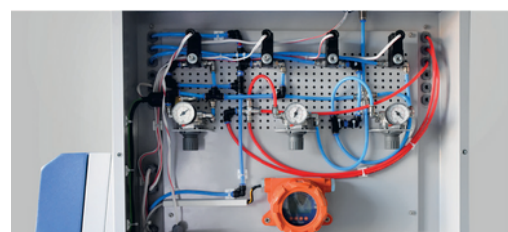
## Gloves

- Solid long-sleeve or interchangeable sleeve/ glove system options
- Chemical, UV, and disinfectant resistant
- Flexible handling and operation
- Strong mechanical properties
- Highly impermeable



## Decontamination System

- Full automatic decontamination process working parallel with work chamber temperature and humidity level
- Integrated H<sub>2</sub>O<sub>2</sub> pulverization
- Sensitive H<sub>2</sub>O<sub>2</sub> measurement
- Timer controlled efficient UV disinfection



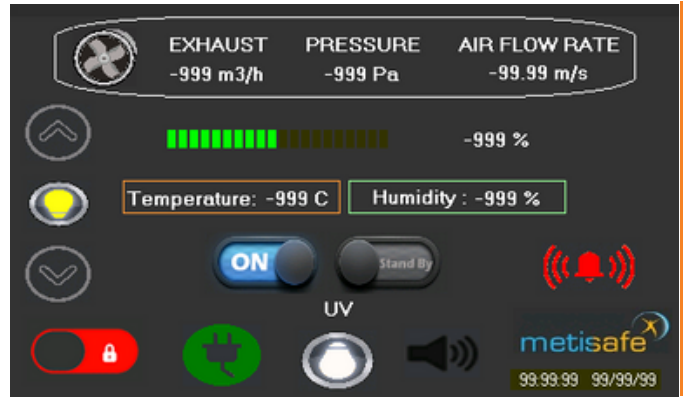
# MICROPROCESSOR CONTROL UNIT

Easy adjusted working parameters by touch pad control panel

Continous airflow velocity measuring sensors a cruise controlled automated airflow rate adjustment

### Large Information Display:

- Work chamber temperature and humidity rates
- Audible visual alarm button and temporary mute
- single button start full automatic decontamination and process follow-up screens
- UV and illumination running times
- System running times
- Alarm status information
- Device on/off button
- Standby operation option
- Illumination level adjustment
- Filter change periods
- Filter integrity status
- Work chamber pressure value
- Date and time information
- Key lock system



### Audio-Visual Warning System:

#### Operation Mode

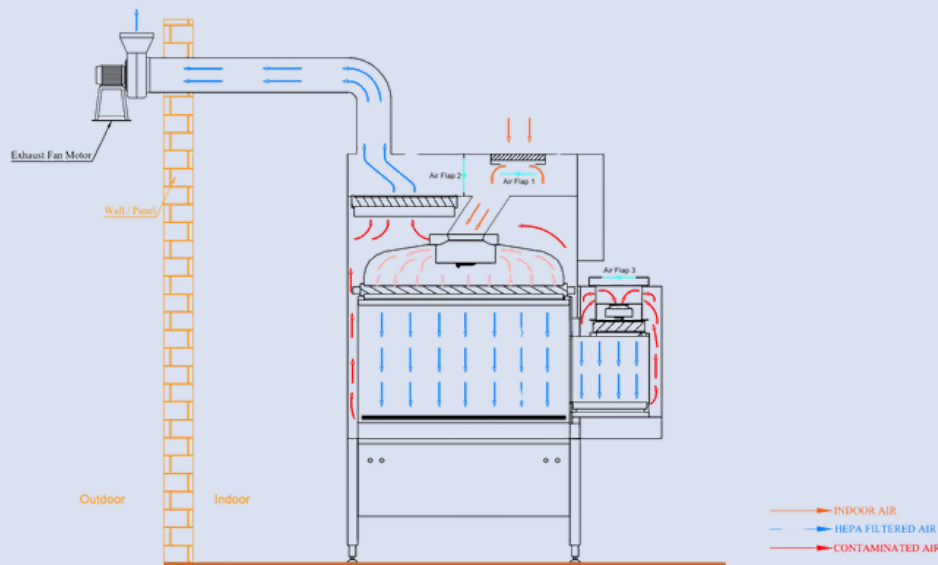
- Fan error warning, Improper pressure warning, Improper air velocity warning, Filter and lamp replacement warning, Front Cover Open warning, Pass-box lid open warning, Technical service maintenance warning

#### Decontamination Mode

- Front Cover Open warning, H2O2 Level warning, Improper pressure warning, Pass-box lid open warning,, Improper humidity and temperature warning, No compressed air warning, Improper Valve/port position

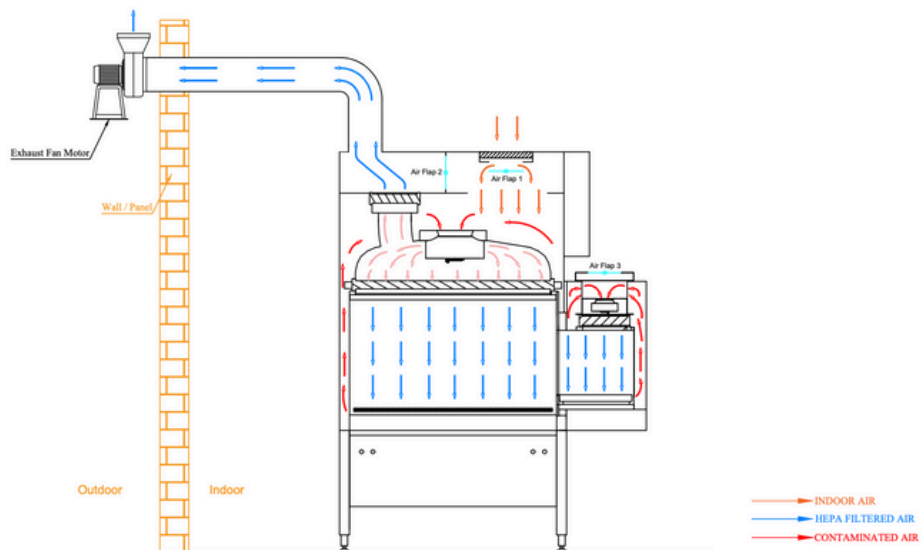
## Negative Pressure Sterility Test Isolator

In negative pressure sterility test isolators, air is passed through the pre-filter on top of the device and the main HEPA/ULPA filter located on the ceiling of the work ing chamber. After the air passing through the HEPA sweeps the work chamber and its surfaces, the exhaust at the top of the device passes through the HEPA/ULPA filter and is discharged to the outdoor environment with environmental protection.



## Positive Pressure Sterility Test Isolator

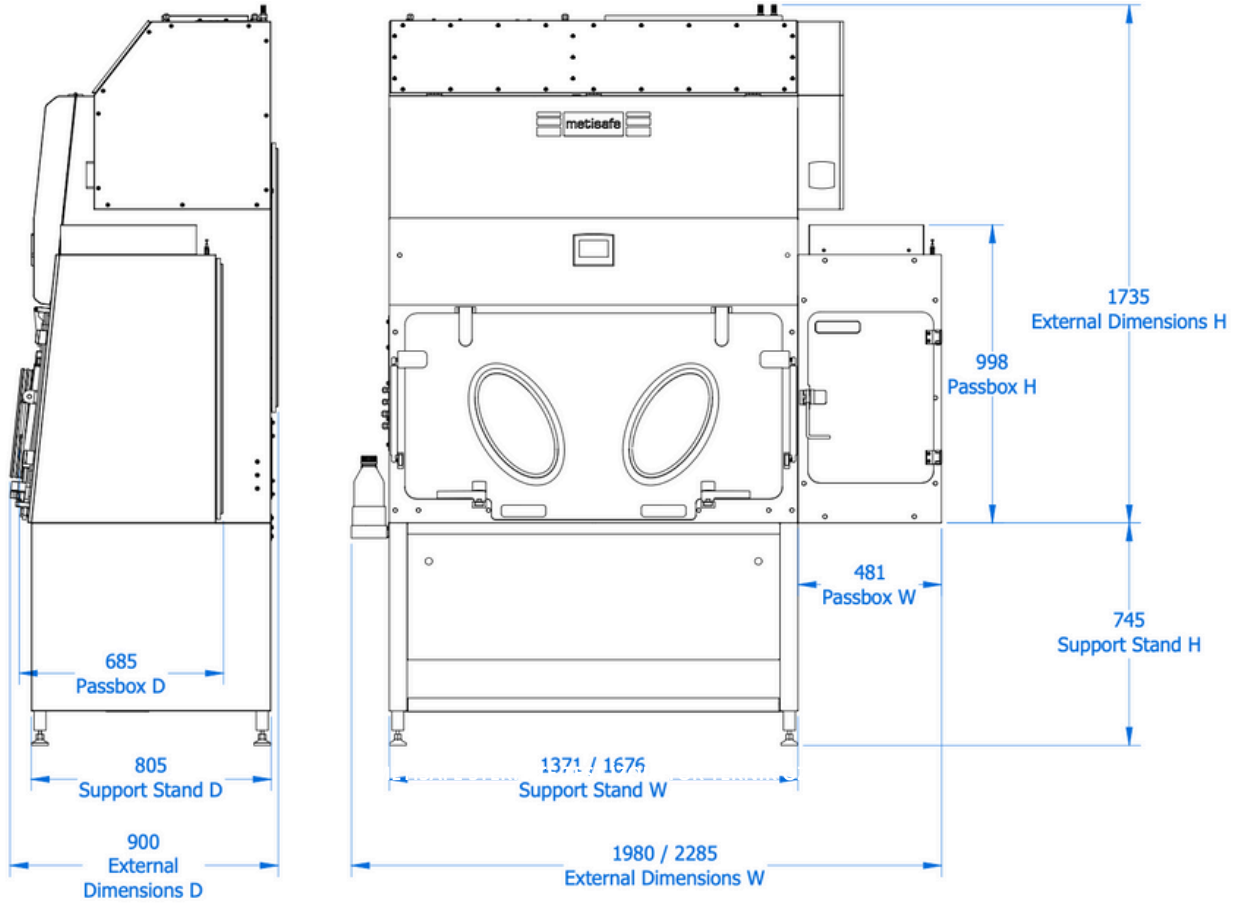
In positive pressure sterility test isolators, 90% (±5%) of the air recirculates in the cabinet after passing through the main HEPA/ULPA filter located on the ceiling of the work chamber. 10% (±5%) of the total air is discharged to the indoor environment with environmental protection.



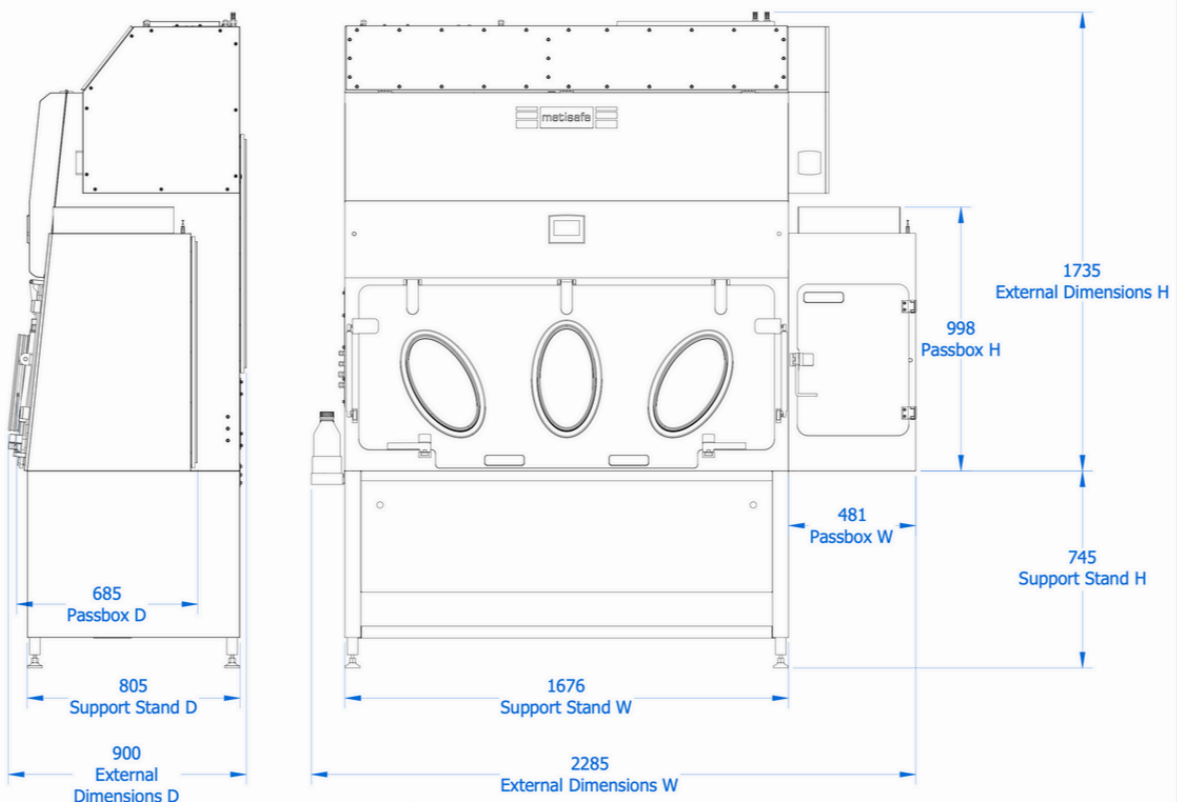
# STERILITY TEST ISOLATOR, C SERIES

## TECHNICAL DRAWING

MSP-II-C120 / MSP-III-C120



MSP-II-C150 / MSP-III-C150



# STERILITY TEST ISOLATOR, C SERIES

## TECHNICAL SPECIFICATION

MODEL	Positive Pressure	MSP-II-C120	MSP-II-C150
	Negative Pressure	MSP-III-C120	MSP-III-C150
<b>DIMENSIONS and WEIGHT</b>			
Internal Dimensions (WxDxH) mm		1250x620x695	1555x620x695
External Dimensions (WxDxH) mm		1950x900x1735	2255x900x1735
Support Stand Dimensions (WxDxH) mm		1371x805x745	1676x805x745
Pass-Box External Dimensions (WxDxH) mm		482x685x998	482x685x998
Working Table Top - Floor Height		840 mm	
<b>HEPA FILTER and AIRFLOW DYNAMICS</b>			
Work Chamber Pressure - Positive		+ 20 Pa	
Work Chamber Pressure - Negative		-125 Pa	
Filters (EN 1822)	Pre-filter	EU4	
	Main Filter	H14 HEPA, 0,3 µm particle %99.995< filtration efficiency	
	Exhaust Filter	H14 HEPA, 0,3 µm particle %99.995< filtration efficiency	
Work Chamber Cleanroom Class	EN ISO 14644-3	< ISO 5	
	US FED 209E	<Class 100	
Standard Exhaust Fan Motor Capacity		Suitable for 10 m Horizontal and 2 m Vertical air duct	
<b>ENERGY</b>			
Energy Consumption 230 VAC - 50 Hz	Fan Filter Unit (Max)	170 W	200 W
	Exhaust Motor (Max)	90 W	90 W
	Illumination Light Density (Adjustable)	36 W	36 W
	UV Lamp	40 W	40 W
	Decontamination Unit	2800 W	2800 W
	Electrical Socket Power / Current	2x1150 W / 2x5 A	2x1150 W / 2x5 A
Total Power / Current (Max)		5436 W/23.6 A	5466 W/23.7 A
Power Consumption Under Normal Operating Conditions (Illumination and Fans)		296 W	326 W
<b>ERGONOMICS and COMFORT</b>			
Noise Level	Operation Mode	< 56 dB(A)	< 56 dB(A)
	Standby Mode	< 50 dB(A)	< 50 dB(A)
Illumination (Adjustable)		850 – 1250 Lux	
<b>WORKING AREA</b>			
Work Bench	Standard	304 Stainless Steel	
	Optional	316 Stainless Steel	
Front Window Thickness		< 10 mm	
Front Glass Glove Port Quantity		2	3
<b>QUALITY and CERTIFICATIONS</b>			
CE, ISO9001-2015 Quality Management Certificate, ISO14644 Cleanroom Class Compatibility, EN61010 Electric and Electronic Safety Compatibility, Accredited Testing Institution Validation Guarantee in case the installation is operated by Metisafe® Certified Technical Personnel			